

APPROVAL SHEET

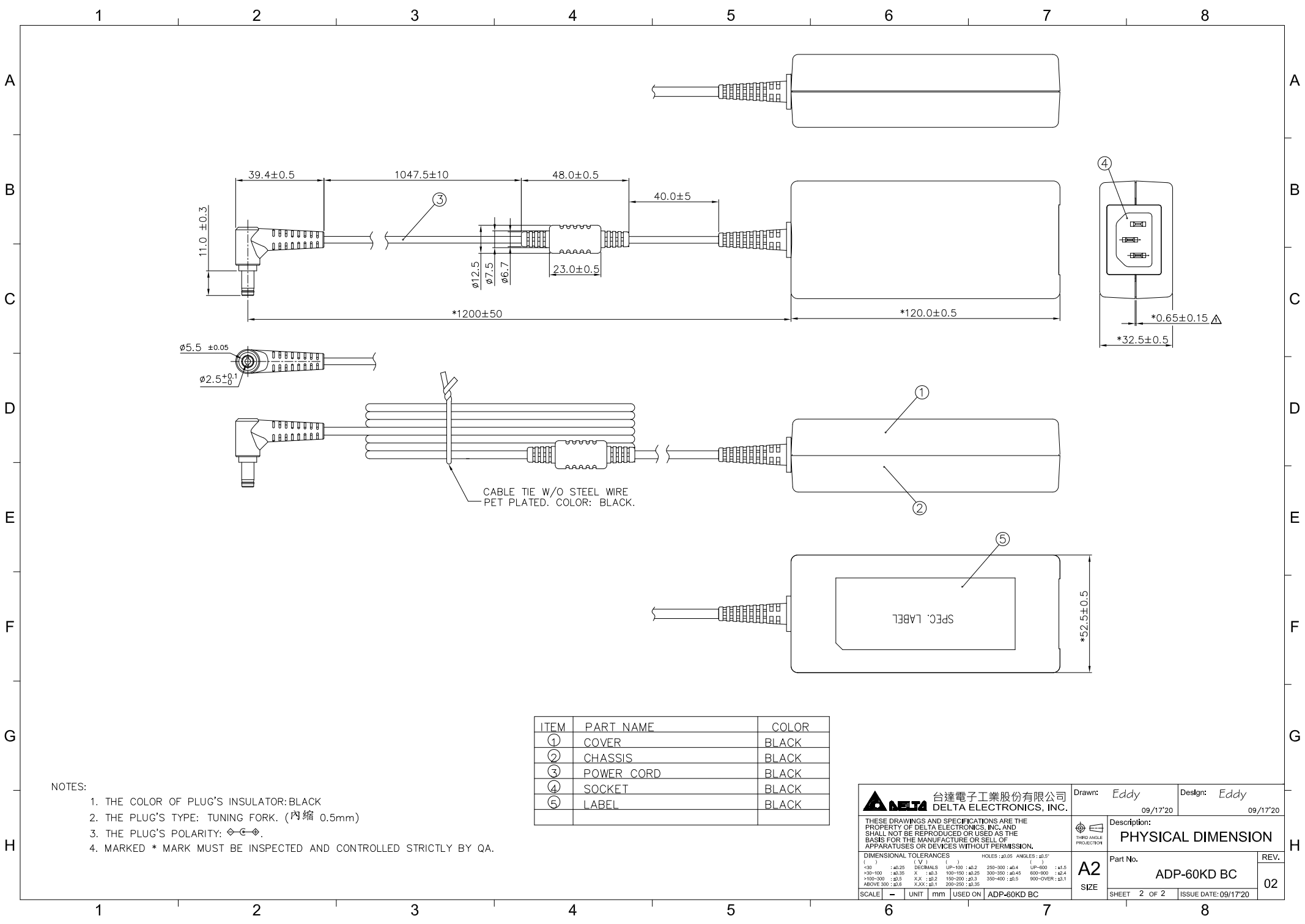


MODEL	:	ADP-60KD BC
CUSTOMER	:	Advantech
CUSTOMER PART NO	:	96PSA-A60W12R1-3
DATE	:	Sep. 18, 2020

DELTA P/N	ADP-60KD BC	SHEET 1 OF 1
CONTENT	Revision History	DATE Sep / 18 / 2020

1.Revision History

NO.	DESCRIPTION	ENGINEER	DATE
00	增加 Core molding 尺寸	Eddy Liao	09/18/2020



- NOTES:
1. THE COLOR OF PLUG'S INSULATOR: BLACK
 2. THE PLUG'S TYPE: TUNING FORK. (內縮 0.5mm)
 3. THE PLUG'S POLARITY:
 4. MARKED * MARK MUST BE INSPECTED AND CONTROLLED STRICTLY BY QA.

ITEM	PART NAME	COLOR
①	COVER	BLACK
②	CHASSIS	BLACK
③	POWER CORD	BLACK
④	SOCKET	BLACK
⑤	LABEL	BLACK

台達電子工業股份有限公司 DELTA ELECTRONICS, INC.	Drawn: Eddy	Desgn: Eddy
	09/17'20	
THESE DRAWINGS AND SPECIFICATIONS ARE THE PROPERTY OF DELTA ELECTRONICS, INC. AND SHALL NOT BE REPRODUCED OR USED AS THE BASIS FOR THE MANUFACTURE OR SELL OF APPARATUSES OR DEVICES WITHOUT PERMISSION.	Description: PHYSICAL DIMENSION	Part No. ADP-60KD BC
DIMENSIONAL TOLERANCES (mm) () : ±0.25 DECIMALS () : ±0.05 ANGLES : ±0.5° <30 : ±0.25 X : ±0.3 100-150 : ±0.25 250-300 : ±0.4 UP-600 : ±1.5 >30-100 : ±0.35 X : ±0.3 100-150 : ±0.25 300-350 : ±0.45 600-900 : ±0.4 >100-300 : ±0.5 X,X : ±0.2 150-200 : ±0.3 300-400 : ±0.5 900-OVER : ±0.3 ABOVE 300 : ±0.8 X,XX : ±0.1 200-250 : ±0.35	SCALE - UNIT mm USED ON ADP-60KD BC	SHEET 2 OF 2 ISSUE DATE: 09/17'20